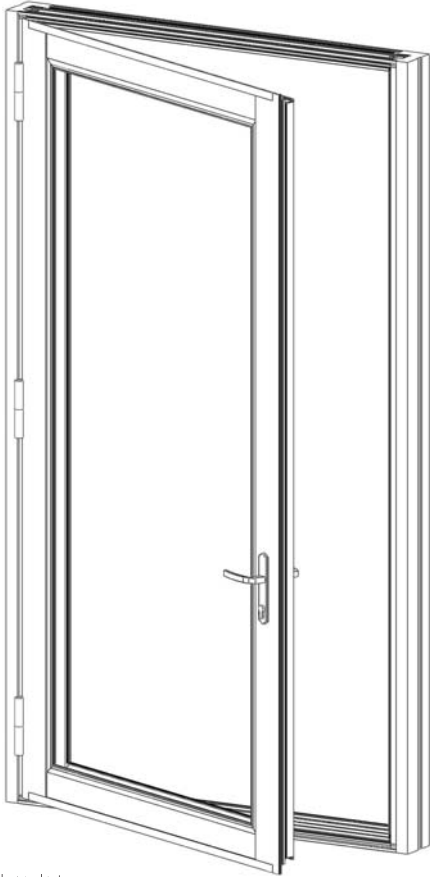


PLEASE READ INSTRUCTIONS COMPLETELY BEFORE STARTING INSTALLION

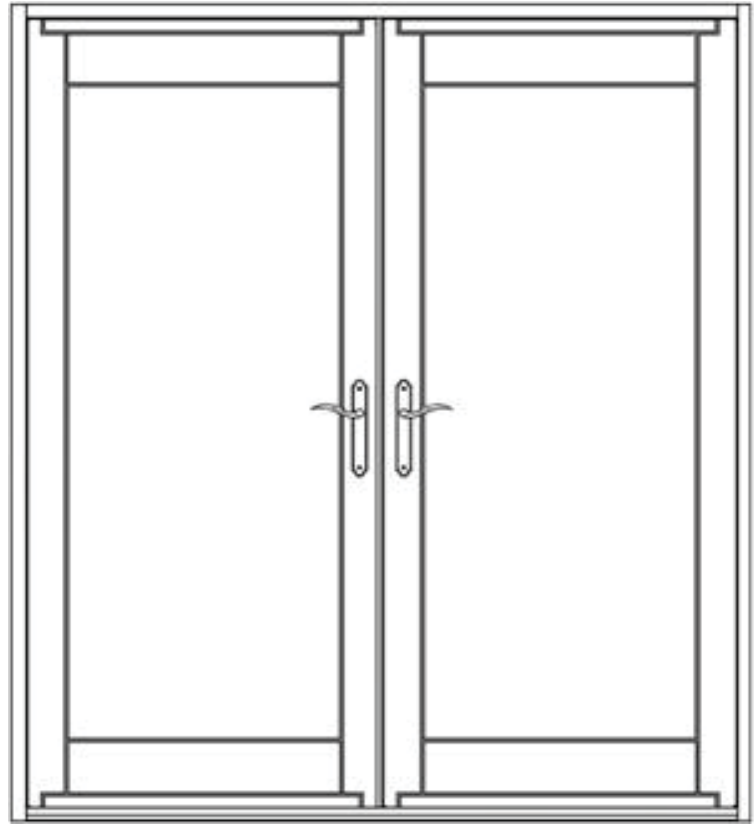
9050 TERRACE DOOR INSTRUCTIONS

TERRACE DOOR INSTALLATION GUIDE

SINGLE TERRACE DOOR



TWIN TERRACE DOOR



CHECK LIST:



Receiving: Inspect the product upon arrival verifying you have all the necessary items.



Handling: Handle the doors with care to prevent possible damage. Be sure to move them while in a vertical position only. If damage occurs, the product may not perform to product specifications and the hardware may not operate properly.



Storage: Doors need to be stored out of the weather, in a clean, dry area, off the ground, not in direct sunlight, where they will not be subject to damage. Lean the units against a wall on a flat and level surface, making sure there is adequate spacing between the products for ventilation.



Pre-Installation Inspections: Measure the door openings. Ideally the building rough opening should be 1/2" wider and taller than the door. Measure within 6" of each corner and at the center of the opening, both vertically and horizontally. Verify that the rough opening is square, level, plumb, and true. **Notify contractor to remedy any discrepancies.**



Apply an appropriate CMU sealer (liquid-applied waterproof coating) to all four sides of the masonry opening and returning 10" on the face of the exterior CMU. The installer must treat the masonry opening with a CMU sealer to help prevent the CMU window cavity from absorbing moisture. The CMU sealer must be applied prior to the installation of buck materials.



Note: All WinDoor products must be installed with caulking/sealant applied in accordance with ASTM E 2112 Standard to ensure a weather tight product. WinDoor recommends the use of a high quality polyurethane or silicone sealant that complies with ASTM C 920 Class 25 NS Specification that is compatible with both the fenestration product material and the building substrate.

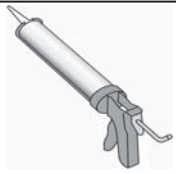
Tools and Materials Required:



Tape Measure



Drill/Screw gun



Sealant



Nylon, Plastic, or Composite Shims



Fasteners



Glass Cups (optional)



Standard & Metric Hex Key Set



Level



Flat Blade Screwdriver

Install the Frame into the Opening



Single doors will be shipped with the door panel already installed in the frame. It should not be necessary for the panel to be removed to install the frame.



Twin doors panels will be shipped separate from the frame. The frame will be installed in the opening prior to the panels being put in.

Both Door Applications have in & out swing functions as well as standard & Low Profile Sill options.

If installing the frame only:

1. Put the frame in the opening.
2. Using appropriate shims, level the sill making sure you have proper shim space.
3. Fasten the bottom jamb corners to hold in place.
4. Plumb the frame jambs with a level and fasten one top corner. Check the diagonals to make sure frame is square. Fasten the opposite top corner.
5. Using a straight edge, ensure the frame is straight on all four sides.
6. Install fasteners, per applicable **current** NOA or Florida Product Approval, into each factory pre-drilled hole.
 - a. Apply sealant into each factory drilled hole prior to installing the fasteners.
 - b. Seal over the top of each fastener after installation.
7. Shims should be used at all fastener locations around frame. **NOTE: These shims should fill the gap without being loose or deforming the frame. Be sure to not over tighten screw.**

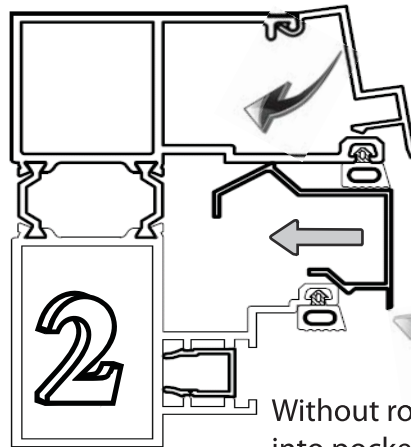
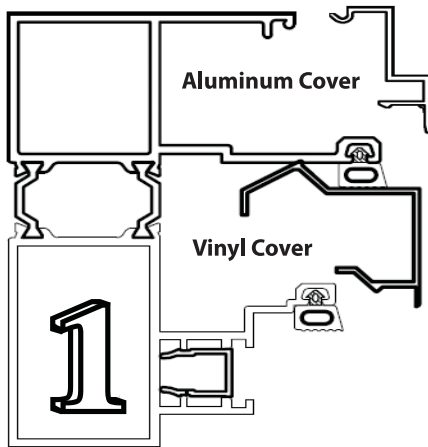
If installing the frame with the panel already in place:

1. Put the door in the opening with the panel closed in the frame.
2. Using appropriate shims, level the sill making sure you have proper shim space.
3. Fasten the bottom jamb corners to hold in place. **NOTE: There are 2 rows of fasteners on each door frame. One row is accessible while the door is closed.**
4. Follow above Steps 4-7.
5. Once the initial row of fasteners has been installed and the frame is secure, open the door and install the remaining fasteners in the second row that was hidden by the panel. **VERY IMPORTANT:** Low Profile sill doors will require that a 5/8" diameter hole be drilled into the sill substrate through the strike plate 3/4" deep to allow for the "Shoot Bolt" to have clearance and not bottom out.

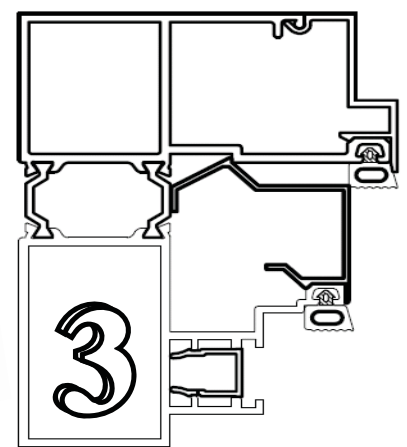
Install Trim Pieces

There will be a total of 6 trim pieces that should be installed at this time (Only 5 if door has Low Profile sill. There will then be no Threshold cover to install.) They consist of...

- **1 aluminum head anchor cover** – Must be installed before jamb covers.
- **1 aluminum threshold cover** – Must be installed before jamb covers.
- **2 black vinyl jamb anchor covers** – These can be installed in any order. (See installation note in #2 below)
- **2 aluminum jamb anchor covers** – Must be installed after the head and threshold covers.



Without rotating into pocket, push cover inward with force applied in this area until snapped into place.



Install Door Panels

If installing a twin door or single door that the panel has been detached from frame:

1. Hang the panels onto the hinges at this time. (3 hinges per panel)
 - a. Begin by lining up the top hinge.
 - b. It is helpful to lower the bottom hinge pin slightly as **shown in Figure 1**. This will allow the bottom of the door panel to slide into position over top of the bottom hinge while the top is already engaged.

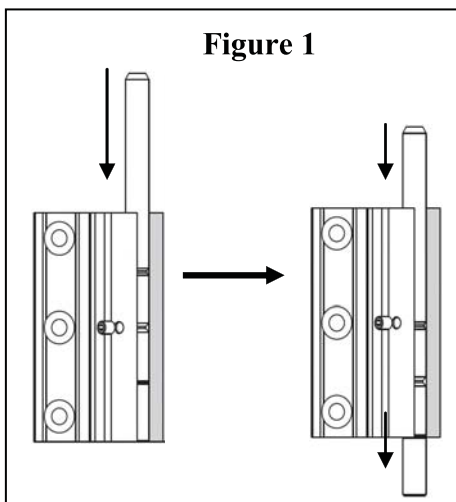


Figure 1

- i. Loosen the small set screw.
 - ii. There is a small groove around the hinge pin that should be flush with the bottom of the hinge leaf when the pin is in the down position.
 - iii. This will allow a small set screw to fit into a second groove and avoid damage to the pin.
- c. It is also helpful to loosen the middle hinge and slide it to where it is out of the way when hanging the door panel.

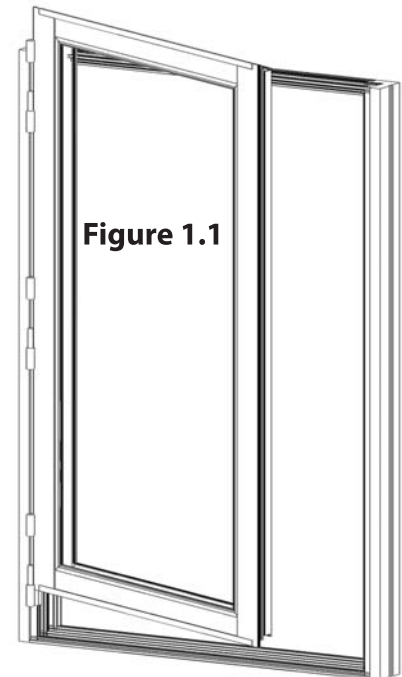


Figure 1.1

NOTE: If it is necessary to pull the hinge pins downward at a later date in order to remove the panel, a cap head set screw may be threaded into the bottom hinge pin in order to pull the pin downward.

- d. Set the panel down fully onto the top and bottom hinges.
 - e. Raise the bottom hinge pin into its finished position and tighten.
 - f. Once the panel is sitting on the top and bottom hinges in the finished position, the middle hinge can then be slid into place and tightened.
2. Install the door handles. (Instructions are packaged with the handles)
 3. Close the door panel(s).

MORE On Next Page



✓ Handle & Thumb Turn Operating Instructions



Before operating a door with a Low Profile sill make sure the 5/8" diameter hole is drilled into the sill substrate through the strike plate 3/4" deep to allow for the "Shoot Bolt" to have clearance and not bottom out. **DAMAGE WILL BE DONE TO THE LOCKING GEARS IF THIS IS NOT DONE.**

Single Doors

- **To Lock:** With the door closed, raise the handle to engage the "Shoot Bolts" into the head and sill. Turn the cylinder knob or key lock to activate the deadbolt, locking the door.
- **To Unlock & Open:** Simply turn the cylinder knob or key lock the opposite direction that was used to lock the system. Open the door by turning the handle down which will disengage the "Shoot Bolts" and enable it to swing open.

Twin Doors (Note: The inactive panel will have dummy handles only.)

- **To Lock:** Close the inactive door first and use the lever on the side of the panel to activate the "Throw Rods." The active panel will operate in the same manner as the panel of a single door. **(See "Single Doors" above)**
- **To Unlock & Open:** Start with the active panel. Unlock and open it using the same method as the single door. If it is necessary to open the inactive panel, the action of closing the panel should be reversed. Opening this panel is not a regular action.

✓ **Operate the Door** Check to make sure doors close, lock, and that all of the hardware is working properly. The panels are installed and checked for proper operation prior to shipment. When there are operating problems, it is either the result of parts not being correctly installed during the installation process or the frame not being installed level or square. In this event, diagnose the problem and adjust accordingly. **(See Adjustment Instructions)**

✓ Adjustment Instructions *The doors are able to be adjusted up & down and in & out at the hinges.*

Height Adjustment (-2/+4 mm):

- This is made by means of the plate secured to the panel side with 3 self-drilling screws. Loosening of the panel hinge plate attachment screws is necessary prior to adjustment. The panel is raised by adjusting the grub screw using a 4 mm Allen key. Turning clockwise raises, counter-clockwise lowers. **(See Figure 2)**
- Re-tighten the hinge plate once adjustment is complete. **(Make sure to not over tighten)**

Side Adjustment (+/-1 mm): First, loosen the eccentric bushing using the 4 mm Allen key. Then turn the eccentric bushing in the hinge on the panel side with a flat blade screwdriver to the desired adjustment. Re-tighten with Allen key. **(See Fig. 3 & 4)**

NOTE: The size of the blade should be large enough to prevent damage to the bushing.

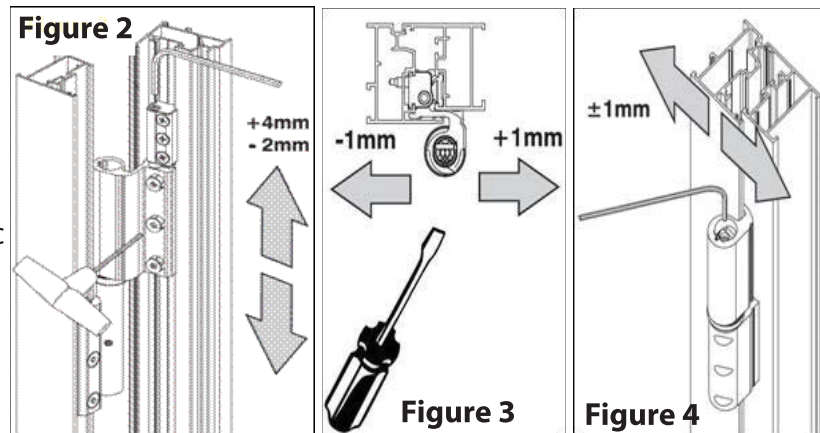


Figure 5

✓ Finishing Detail

- Install or replace the black plastic hinge caps when hinge adjustment is complete, as shown in **Figure 5.**
- Install backer rod and exterior perimeter sealants as specified to ensure a watertight condition.
- Insulate around the frame with appropriate low expansion foam.

