

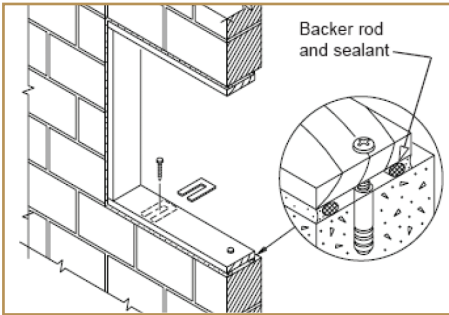
SERIES 9020-9063: Fixed WinDows



✓ **1)** Check WinDoor opening for correct size.

✓ **2)** Verify that the rough opening is plumb, level, square, and true. Notify the contractor to remedy any discrepancies. Apply CMU sealer (liquid-applied waterproof coating) to all four sides of the masonry opening and returning 10" on the face of the exterior CMU. The installer must treat the masonry opening with a CMU sealer for the purpose of sealing the CMU window cavity from absorbing water. This application will be put on before the installation of the buck materials.

NOTE: All WinDoor products must be installed with sealants applied in such a way as to ensure a weather tight product. WinDoor recommends the use of a high quality polyurethane or silicone sealant that complies with ASTM C-920 Class 25NS specifications



✓ **3)** Set window into opening. Use plastic, nylon, or composite shims at each fastener location. Ensure that there is no more than a 1/4" shim space between the frame and the rough opening.

✓ **4)** Install the appropriate fasteners into each factory pre-punched hole:

A) Recommended installation fasteners for wood frame substrate (these must achieve 1 1/2" minimum penetration into the wood):

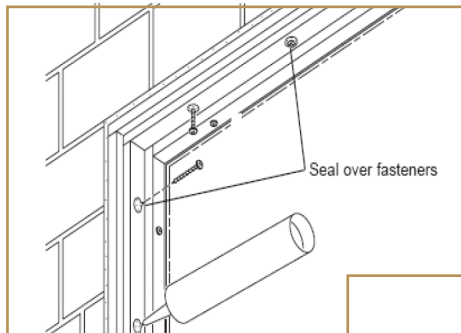
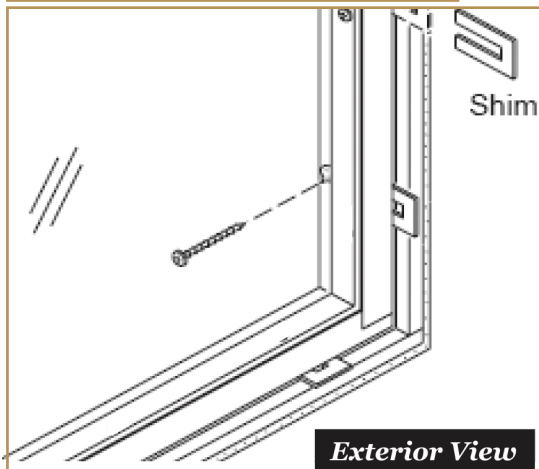
1. 9020 Series: #12 wood screw with a minimum length of 2"
2. 9063 Series: #14 wood screw with a minimum length of 3 1/2"

B) Recommended installation fasteners for concrete/masonry substrate (these must achieve 1 1/4" minimum penetration into the concrete/masonry):

1. 9020 Series: 1/4" Tapcon with a minimum length of 1 3/4"
2. 9063 Series: 1/4" Tapcon with a minimum length of 3 1/4"

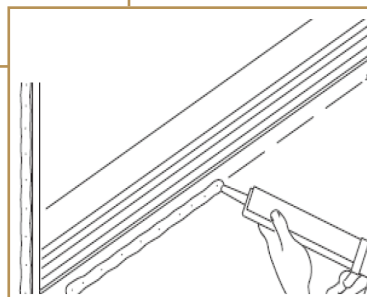
C. Recommended installation fasteners into mullions (the penetration into mullion must include the drill tip, plus 3 threads of the screw (minimum) beyond the inner face of the mullion):

1. 9020 Series: #12 self-drilling screw with a minimum length of 1"
2. 9063 Series: #14 self-drilling screw with a minimum length of 2 3/4"



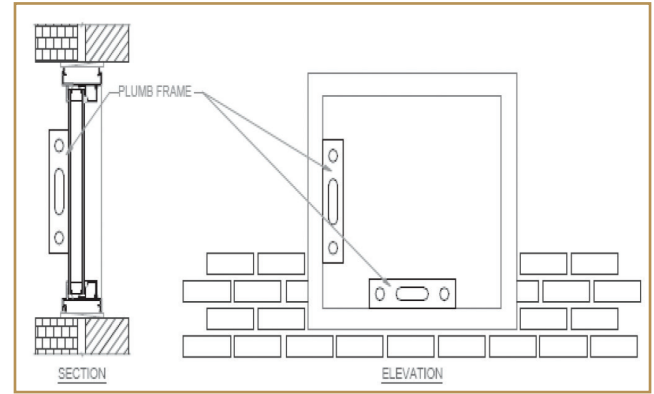
✓ **5)** Using a high quality polyurethane or silicone sealant, make sure each fastener is thoroughly sealed.

✓ **6)** Snap the trim pieces into place covering all exposed fasteners.

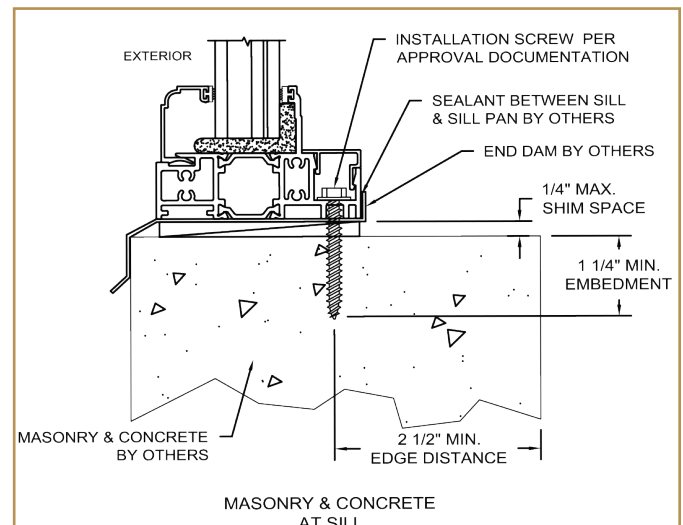


✓ **7)** Install backer rod and exterior perimeter sealants as specified to ensure a watertight condition.

For Mullion Mounting Instructions, Please see the Mullion instructions



Note: When wood bucks are used, the members will be pressure or chemically-treated. Apply a 3/8" bead of sealant under the buck material to ensure a weather resistant barrier. The buck materials will be installed in such a manner that all gaps between the buck and the structure are sealed.



WinDoor recommends the use of a sill pan & end dam under each WinDoor Installation.