

PLEASE REVIEW THESE INSTRUCTIONS COMPLETELY BEFORE STARTING INSTALLATION

WINDOOR

WinDoor Series Envista GW9994G Assembly Instructions



WinDoor Incorporated
160 Triple Diamond Blvd, North Venice, FL 34275
(941) 480-1600
www.windoorinc.com

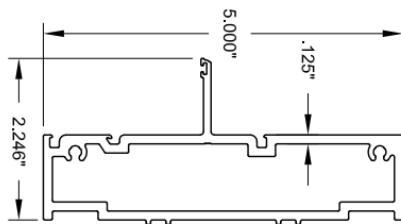
Warning: Proper installation procedures are necessary to insure the performance of this product. Please review instructions included with this product completely before starting installation. Failure to follow recommended installation procedures can result in voiding the warranty.

Materials

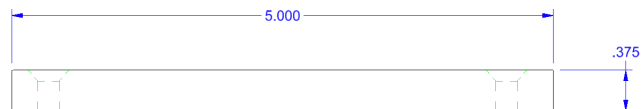
(1) Modular Panels



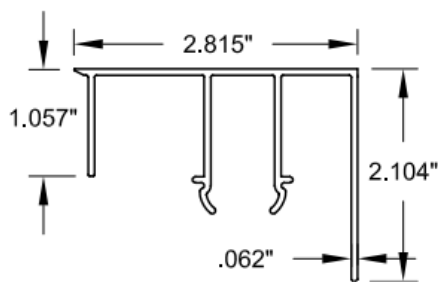
(2) Standard Jamb (23046)



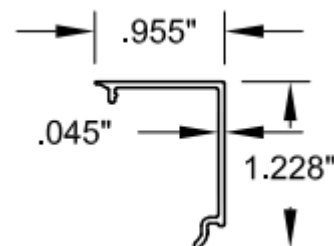
(3) 3/8" x 5" Aluminum Plate Jamb (23074)



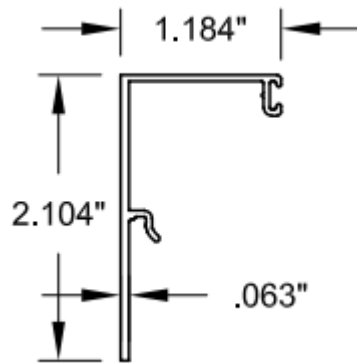
(4) Interior Horizontal Bead (23066)



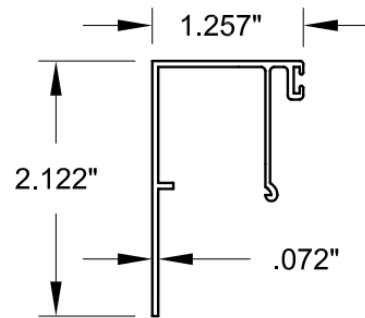
(5) Interior Vertical Bead (21013)



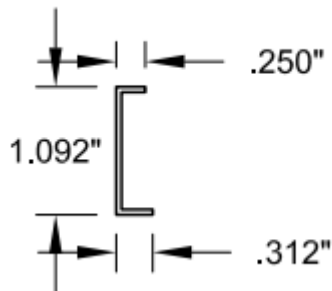
(6) 7/8" 3X Lami Exterior Bead (23065)



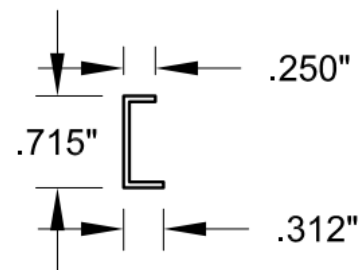
(7) 5/8" 2X Lami Exterior Bead (23069)



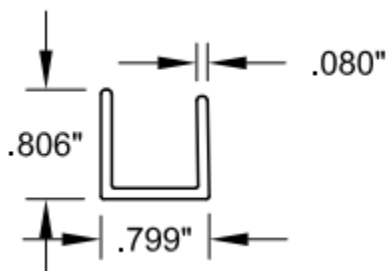
(8) 7/8" 3X Lami Corner Guard (23064)



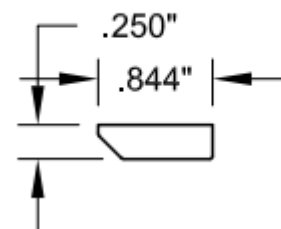
(9) 5/8" 2X Lami Corner Guard (23073)



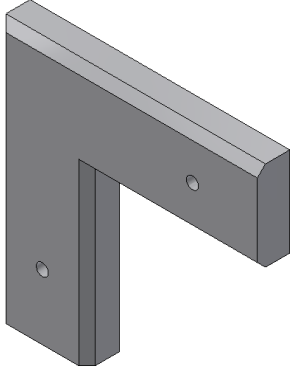
(10) Installation Silicone Sealing Clip (23075)



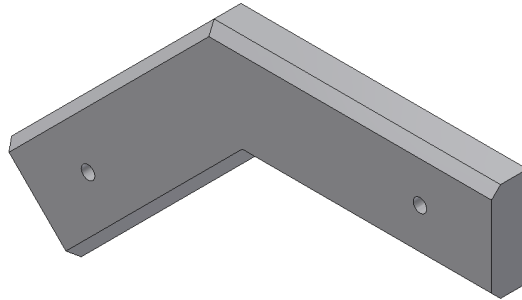
(11) Straight Wall Anchor Channel Coupling (23067)



(12) 90 Degree Corner Key (23070)



(13) 135 Degree Corner Key (23071)



Recommended Equipment

- **PPE including but not limited to: Safety glasses, steel toes, and any additional company required PPE.**
- Drill w/ several drill and driver bits
- Rubber Mallet
- 2x4 Block of wood
- Anchors
- 6' Level
- Torpedo level
- Framing Square
- Tape measure
- Denatured alcohol
- Supplied color specific silicone
- Wax paper
- Painters tape
- Flat head screwdriver
- Caulking gun

1. General Notes: Series GW9994G

- 1) THIS PRODUCT HAS BEEN DESIGNED & TESTED TO COMPLY WITH THE REQUIREMENTS OF THE CURRENT FLORIDA BUILDING CODE.

- 2) SHUTTERS ARE NOT REQUIRED WHEN USED IN WIND-BORNE DEBRIS REGIONS.
- 3) ALL WOOD BUCKS LESS THAN 1-1/2" THICK ARE TO BE CONSIDERED 1X INSTALLATIONS. 1X WOOD BUCKS ARE OPTIONAL IF UNIT IS INSTALLED DIRECTLY TO SUBSTRATE. WOOD BUCKS DEPICTED AS 2X ARE 1-1/2" THICK OR GREATER. 1X AND 2X BUCKS (WHEN USED) SHALL BE DESIGNED TO PROPERLY TRANSFER LOADS TO THE STRUCTURE. WOOD BUCK DESIGN AND INSTALLATION IS THE RESPONSIBILITY OF THE ENGINEER OR ARCHITECT OF RECORD.
- 4) ANCHOR EMBEDMENT TO BASE MATERIAL SHALL BE BEYOND WALL DRESSING OR STUCCO. USE ANCHORS OF SUFFICIENT LENGTH. OVERALL SEALING/FLASHING STRATEGY FOR WATER RESISTANCE OF INSTALLATION SHALL BE DONE BY OTHERS AND IS BEYOND THE SCOPE OF THESE INSTRUCTIONS.
- 5) SHIMS ARE REQUIRED AT EACH ANCHOR LOCATION WHERE THE PRODUCT IS NOT FLUSH TO THE SUBSTRATE. USE SHIMS CAPABLE OF TRANSFERRING APPLIED LOADS. WOOD BUCKS, BY OTHERS, MUST BE SUFFICIENTLY ANCHORED TO RESIST LOADS IMPOSED ON THEM BY WINDOW.
- 6) THE ANCHORAGE METHODS SHOWN HAVE BEEN DESIGNED TO RESIST THE WIND LOADS CORRESPONDING TO THE REQUIRED DESIGN PRESSURE. THE 33-1/3% STRESS INCREASE HAS NOT BEEN USED IN THE DESIGN OF THIS PRODUCT. THE 1.6 LOAD DURATION FACTOR WAS USED FOR THE EVALUATION OF ANCHORS INTO WOOD. ANCHORS THAT COME INTO CONTACT WITH OTHER DISSIMILAR MATERIALS SHALL MEET THE REQUIREMENTS OF THE FLORIDA BUILDING CODE FOR CORROSION RESISTANCE.
- 7) Design loads based on structural test pressure, frame analysis and glass per ASTM E1300. Refer to Florida Product Approval for GW9994G.

ENVISTA COMES IN TWO GLASS CONFIGURATIONS: 5/8" 2x LAMI OR 7/8" 3x LAMI. PLEASE NOTE WHICH VERSION YOU HAVE AND SELECT APPROPRIATE FPA FOR ANCHORAGE DETAILS.

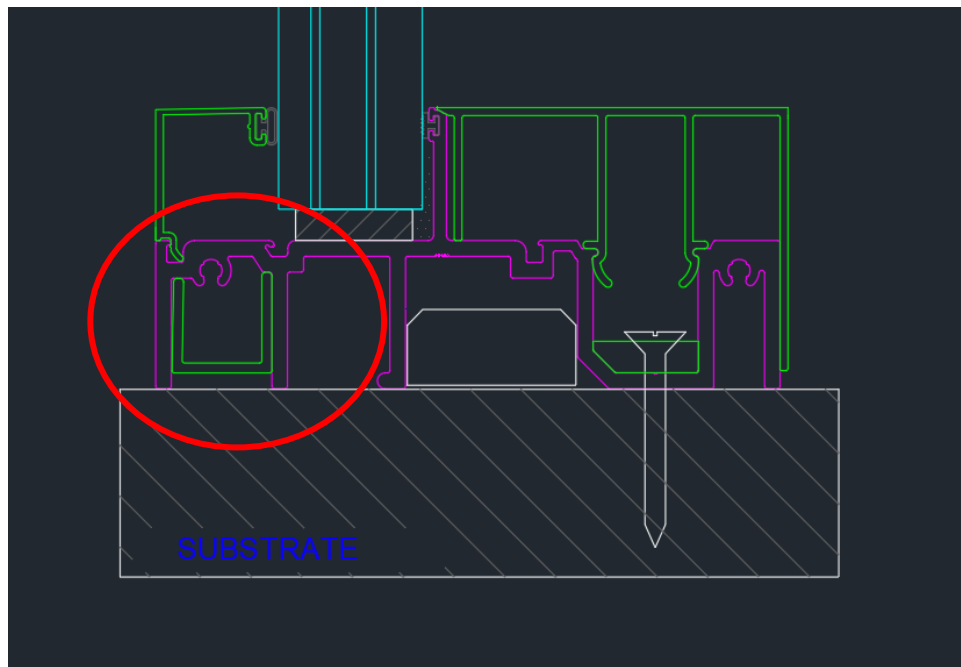
2 Preparing the rough opening

Step 1. Prepare the rough opening and clear of debris. Ensure that the opening is true, level, plumb, and square.

Step 2. Open packaging and inspect parts for damage. Ensure that all parts are provided and correct before beginning any assembly.

VERY IMPORTANT: Please exercise the upmost care with installing Envista to avoid injury. Envista should only be assembled and installed by a professional. Envista modular units are very heavy and should only be lifted with appropriate industry specific lift assist equipment.

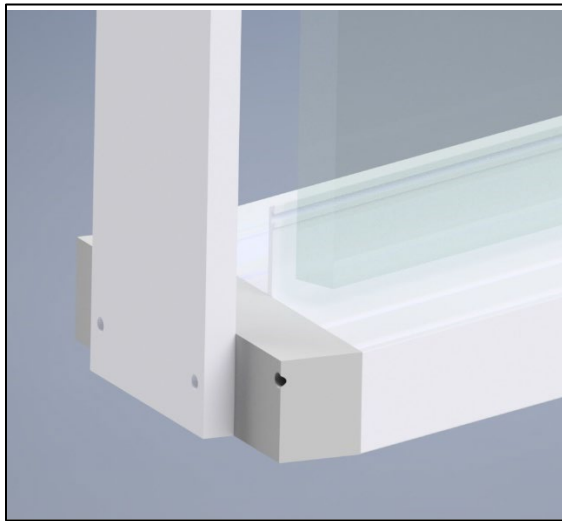
Step 3. Verify Installation Silicone Sealing Clip (23075) is installed in each head/sill. Sealing Clip 23075 will be supplied in mill finish and allow for sealing of top and bottom of panel.



3. For assembling Envista Wall Unit.

Step 1. Take note of the order of modular panels and how they are labeled. Panels will be numbered in order of left to right from exterior.

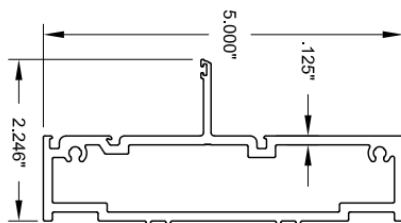
Step 2. Envista modular units will receive a shipping spacer and mill finish 'dummy' jamb for shipping. As you install units, please remember to remove both the shipping spacer and 'dummy' jamb prior to install.



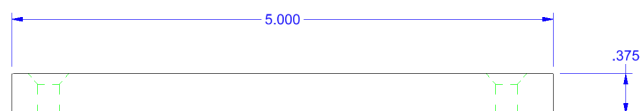
- Note: 'Dummy' jambs are always in mill finish to differentiate from finished/painted product. They may be discarded after removal.

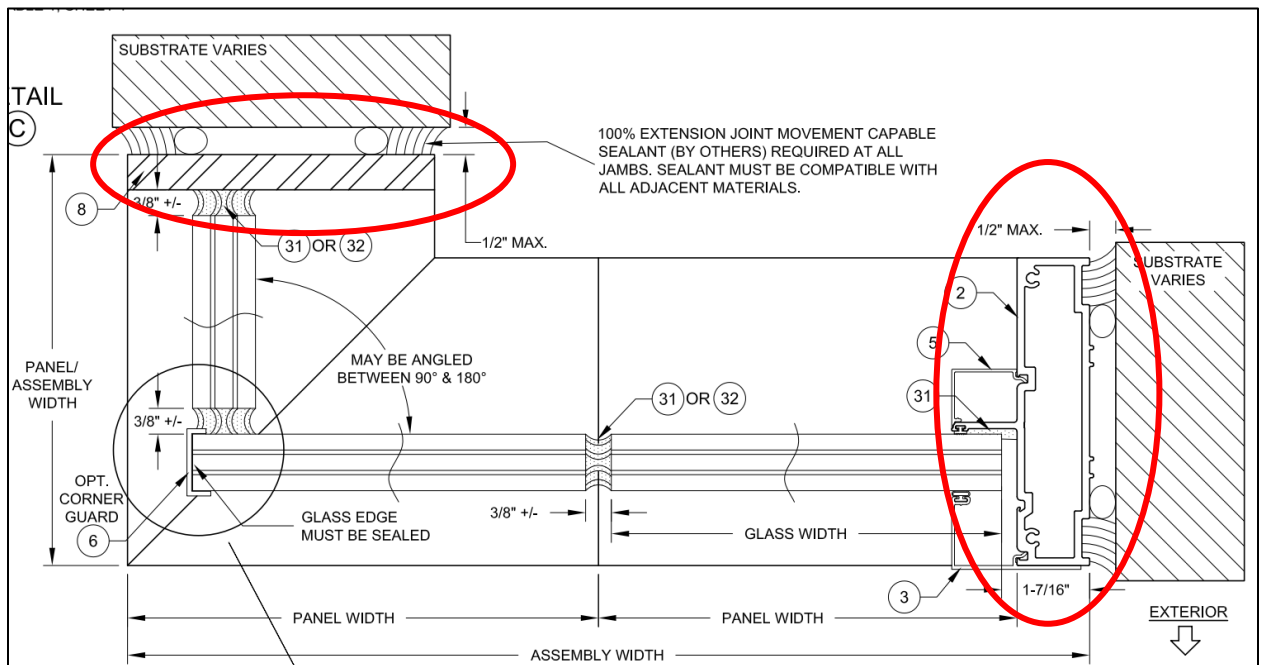
Step 3. All Envista units will have (2) panels with a finished/painted jamb. Many will not have a permanent jamb, only 'mill finish 'dummy' jambs for shipping. Identify which type of jamb you have. Windoor supplies (2) Jamb options with Envista: a standard jamb and a Plate Jamb.

(2) Standard Jamb (23046)



(3) 3/8" x 5" Aluminum Plate Jamb (23074)





VERY IMPORTANT: Please exercise the upmost care with installing Envista to avoid injury. Envista should only be assembled and installed by a professional. Envista modular units are very heavy and should only be lifted with appropriate industry specific lift assist equipment.

Step 4. Place the first unit into your opening starting from the left. Note: All jamb options are anchorless.

Step 5. Align first Envista unit into proper position and use appropriate anchorage type and pattern for head and sill. Reference FPA #15709-1 or #15709-2 depending on model selected. All Envista will come with anchorage holes pre-drilled. Use shims as needed (up to 1/4").

- Alignment of first panel is critical since all following panels will align with the first anchored panel.

USE ONLY SUBSTRATE APPROPRIATE ANCHORS LISTED IN APPROPRIATE FPA. FOLLOW EMBEDMENT, EDGE DISTANCE AND SUBSTRATE REQUIREMENTS PER FPA. ANY INSTALLATION OPTION SHOWN MAY BE USED ON ANY FRAME MEMBER.

Step 6. Align the second Envista unit beside the first installed unit. **For straight wall units only:** use 8" coupling bracket (23067) between units. Center coupling bracket between panels in anchor channel on head and sill. Make sure to align the install holes on coupling to head/sill pre-drilled anchor hole. Using a flat head screwdriver and mallet drive coupling into channel to align second panel to the anchored first panel.



Step 7. Anchor second panel using appropriate anchorage type and pattern for head and sill. Reference FPA #15709-1 or #15709-2 depending on model selected. All Envista will come with anchorage holes pre-drilled. Use shims as needed (up to 1/4").

Step 8. Repeat steps 7 and 8 until all wall units are installed and anchored.

Step 9. **If required: Have inspector verify anchorage prior to installing interior bead.**

Step 10. Following Inspection, place interior horizontal bead (23066) on head and sill and using mallet tap into place. Starting from one end to the other, carefully hammer in bead, allowing it to snap into place.

Step 11. After installation of Interior bead 23066, install vertical interior bead (21013) on jamb. Starting from one end to the other, carefully hammer in bead, allowing it to snap into place.

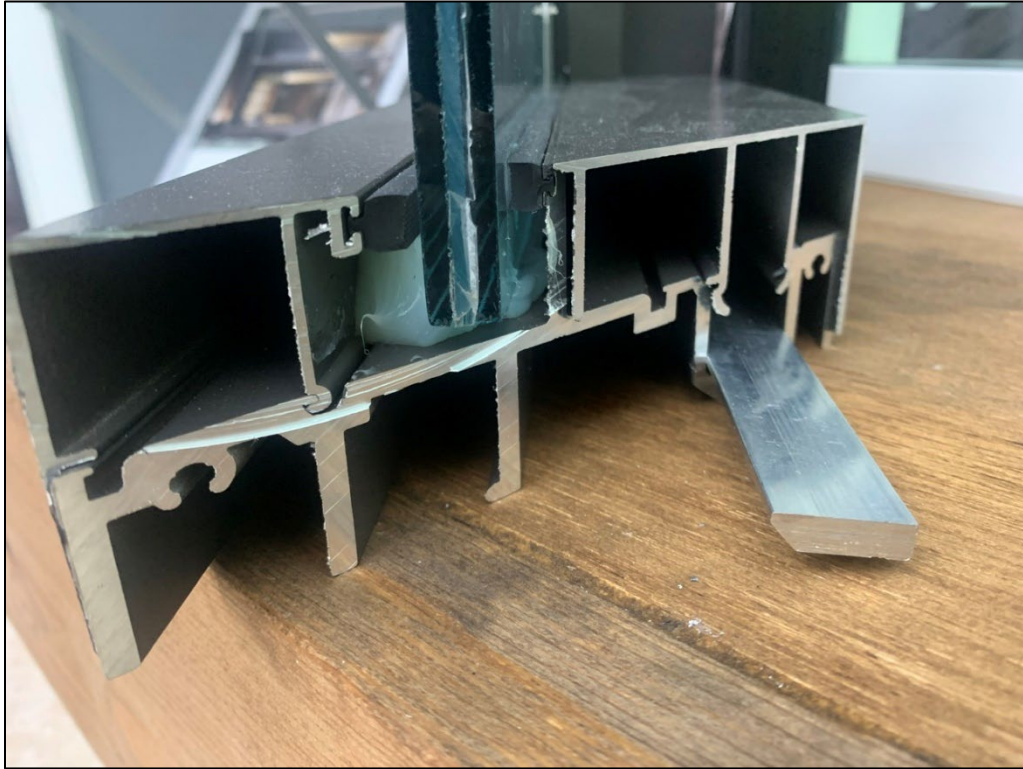
Note: 21013 Interior Vertical Bead is only supplied with Standard Jamb (23046). Plate Jamb does NOT receive this part.

Step 12. Depending on your order, you will either be supplied with: 7/8" 3X Lami Exterior Bead (23065) OR 5/8" 2X Lami Exterior Bead (23069). Verify bead is tightly secure to glass. Bead may have shifted in transit. **For straight wall units only:** Straight walls will receive bead running the entire width of the opening.

- During shipment they will receive mill finish 'dummy' bead for transit. Remove 'dummy' bead and locate finished/painted bead.

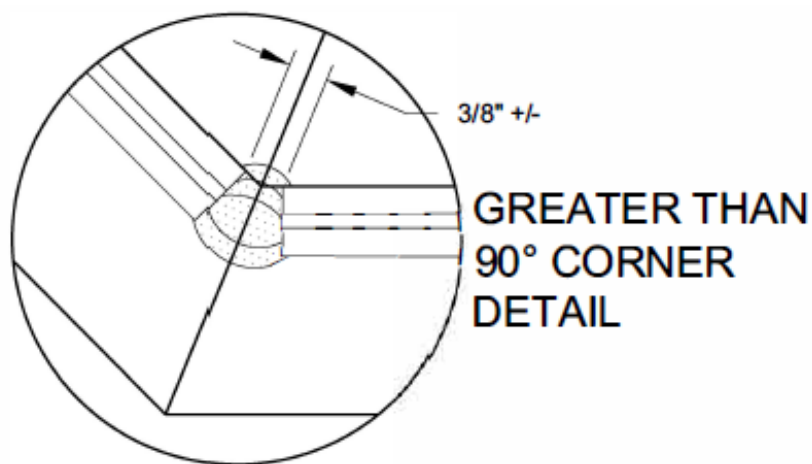
For Straight wall units: Starting from one end to the other, carefully hammer in exterior bead, allowing it to snap into place. Start with Verticals and finish with Horizontal bead.

Cutaway side view below:



4. Glazing between lites

Step 1. Depending on your configuration (i.e. angled units, Corners, Straight walls, etc) you will use varying amounts of silicone. Custom angled units will use more silicone on the exterior than on the interior (see image example below). Please use the supplied silicone for glazing between lites.



Step 2. Using denatured alcohol clean vertical glass edge prior to glazing.

Step 3. Using blue painters tape, run a stripe of tape along each vertical glass edge on both the interior and exterior.

Step 4. Tape wax paper over exposed gap between lites on side. Make sure to have a tight seal against glass to avoid squeeze out of silicone.



Step 5. Using supplied Windoor silicone and caulking gun, fill cavity between lites and allow to cure per caulking tube curing instructions.

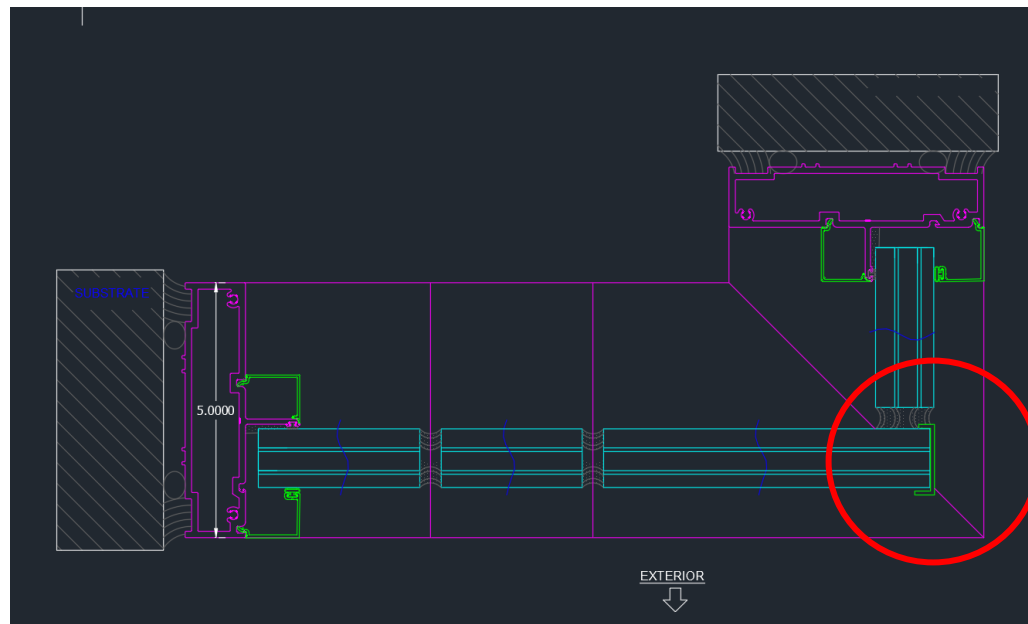
Step 6. Remove tape and wax paper when silicone has cured.

Note: The above steps are only guidelines for applying silicone, numerous methods exist for applying silicone evenly and cleanly to Envista and may differ from instructions.



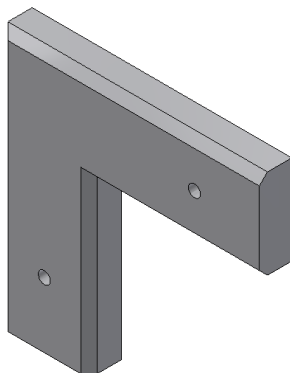
5. Notes on 90 Degree Corner Units and Custom Angles

Note 1: 90 Degree corner units only will receive a finished and optional corner guard (i.e. cap) that may be installed on Envista. Unit will receive a 7/8" 3X Lami Corner Guard (23064) OR 5/8" 2X Lami Corner Guard (23073) depending on glass type. Corner guard must be installed prior to applying silicone to lites and it capped onto glass edge with supplied silicone as seen in image below.

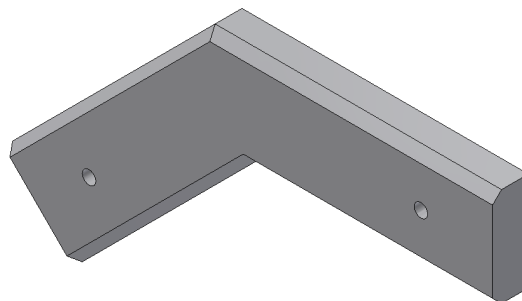


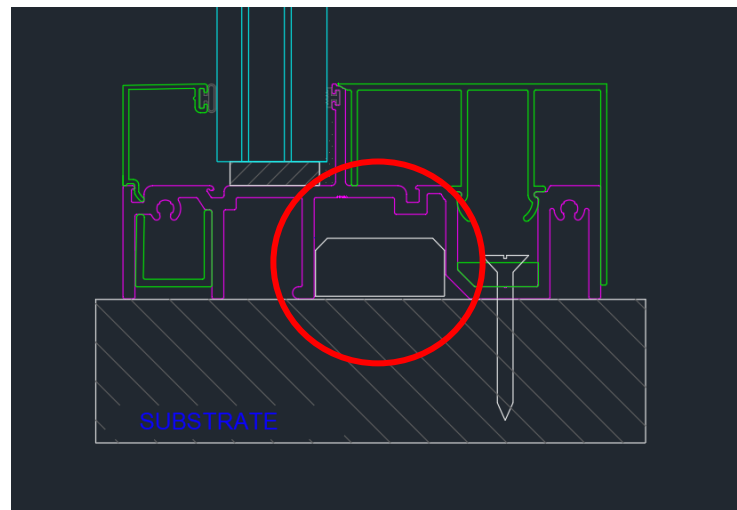
Note 1: 90 & 135 Degree units only are also supplied with a corner key/alignment block (23070 and 23071, respectively) to help align corner angles during installation. Block is optional. After a unit is placed into position and anchored, the block may be slid under head and sill to allow next unit to slide against it and maintain a tight angle.

(12) 90 Degree Corner Key (23070)



(13) 135 Degree Corner Key (23071)





6. After Installation

- The exterior of Envista frames and glass should be washed with a mild cleaning solution of detergent or soap and water. Coastal Conditions require that the panels be cleaned monthly while Non-Coastal areas require cleaning a minimum of twice a year.
- Any concerns with installation please contact your local dealer immediately.